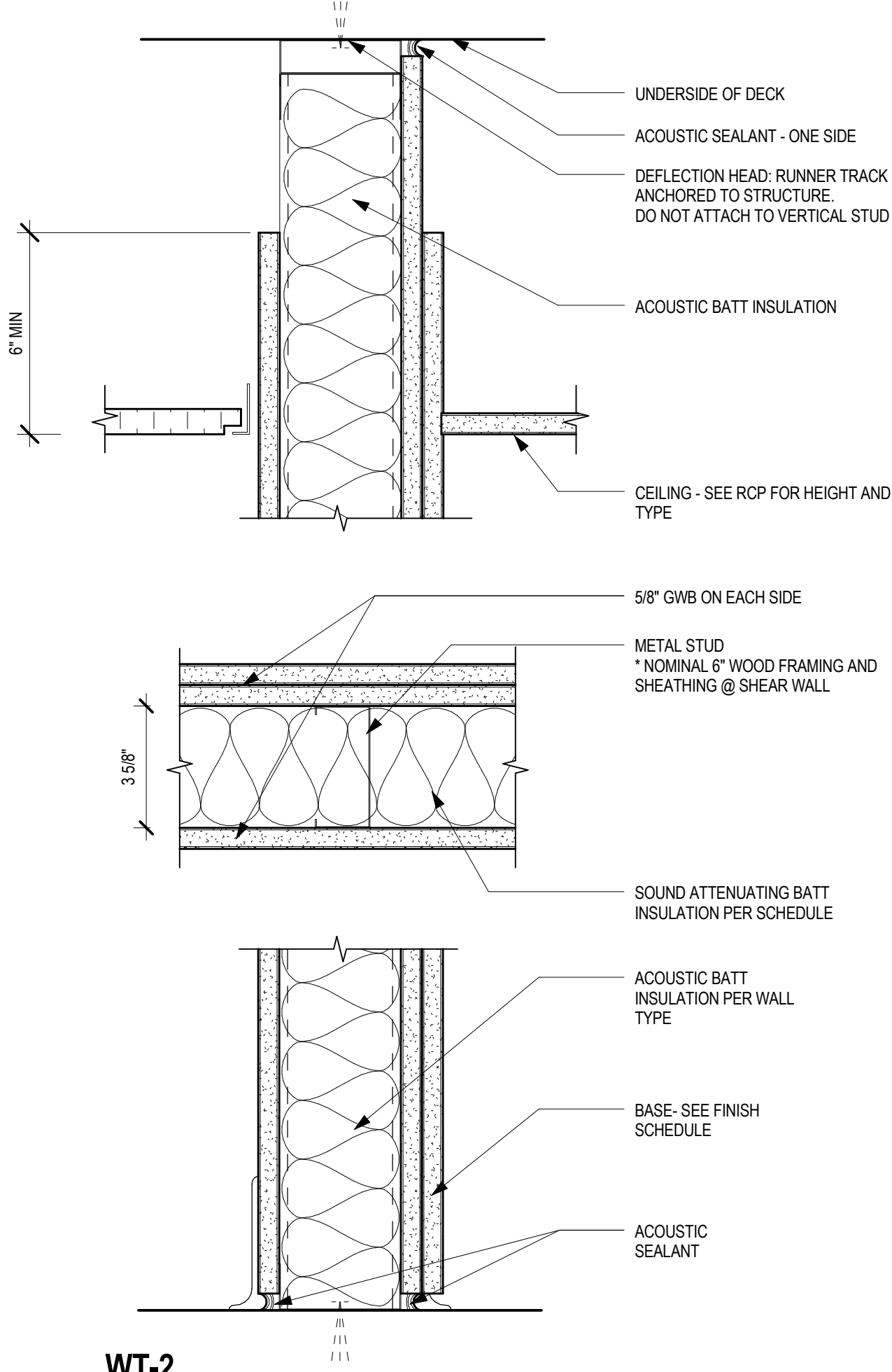
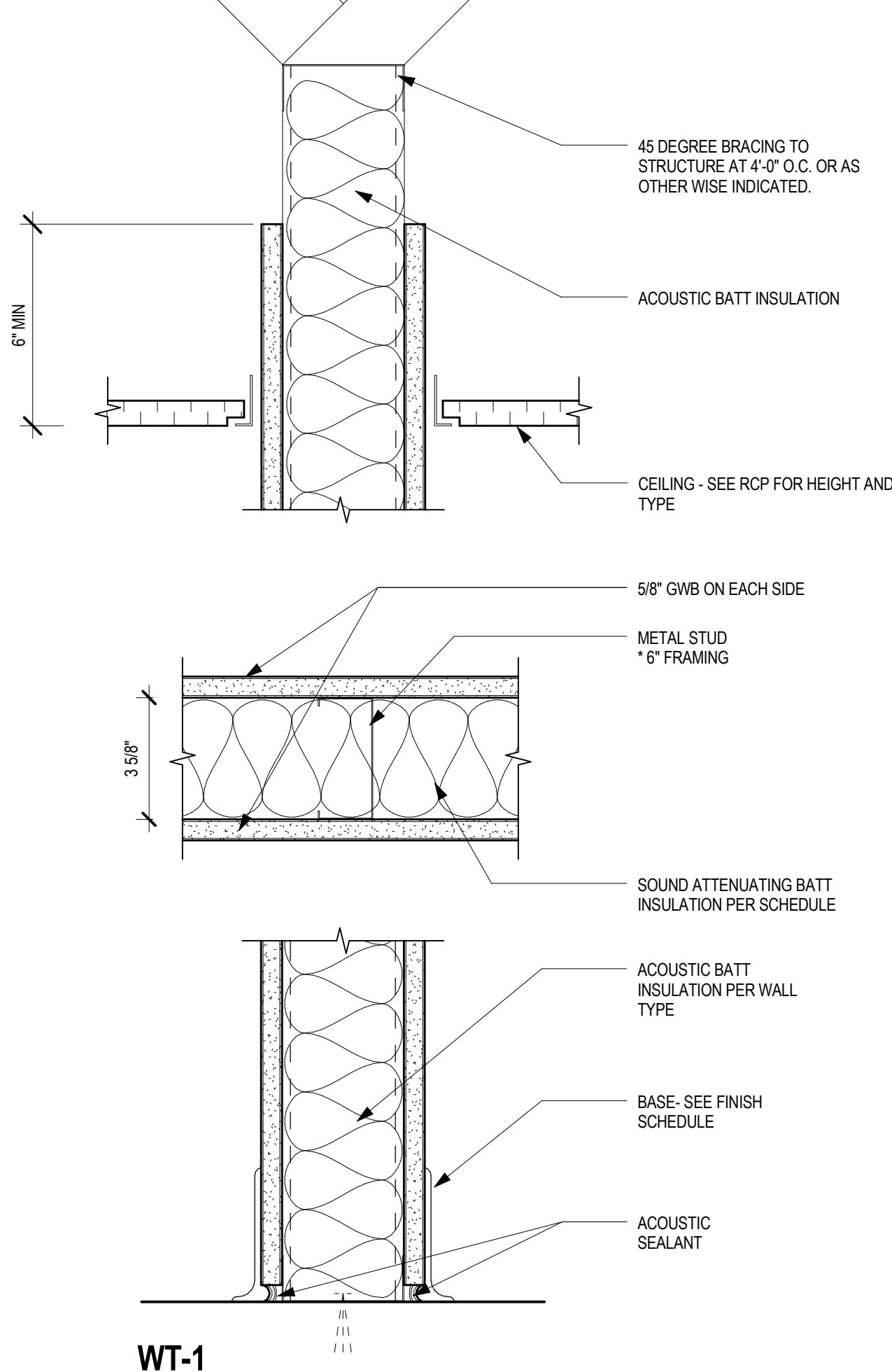


WT-3
1 HOUR RATED PARTITIONS W/ ACOUSTIC BATTS
GA FILE NO. WP 1072
STC 45-49

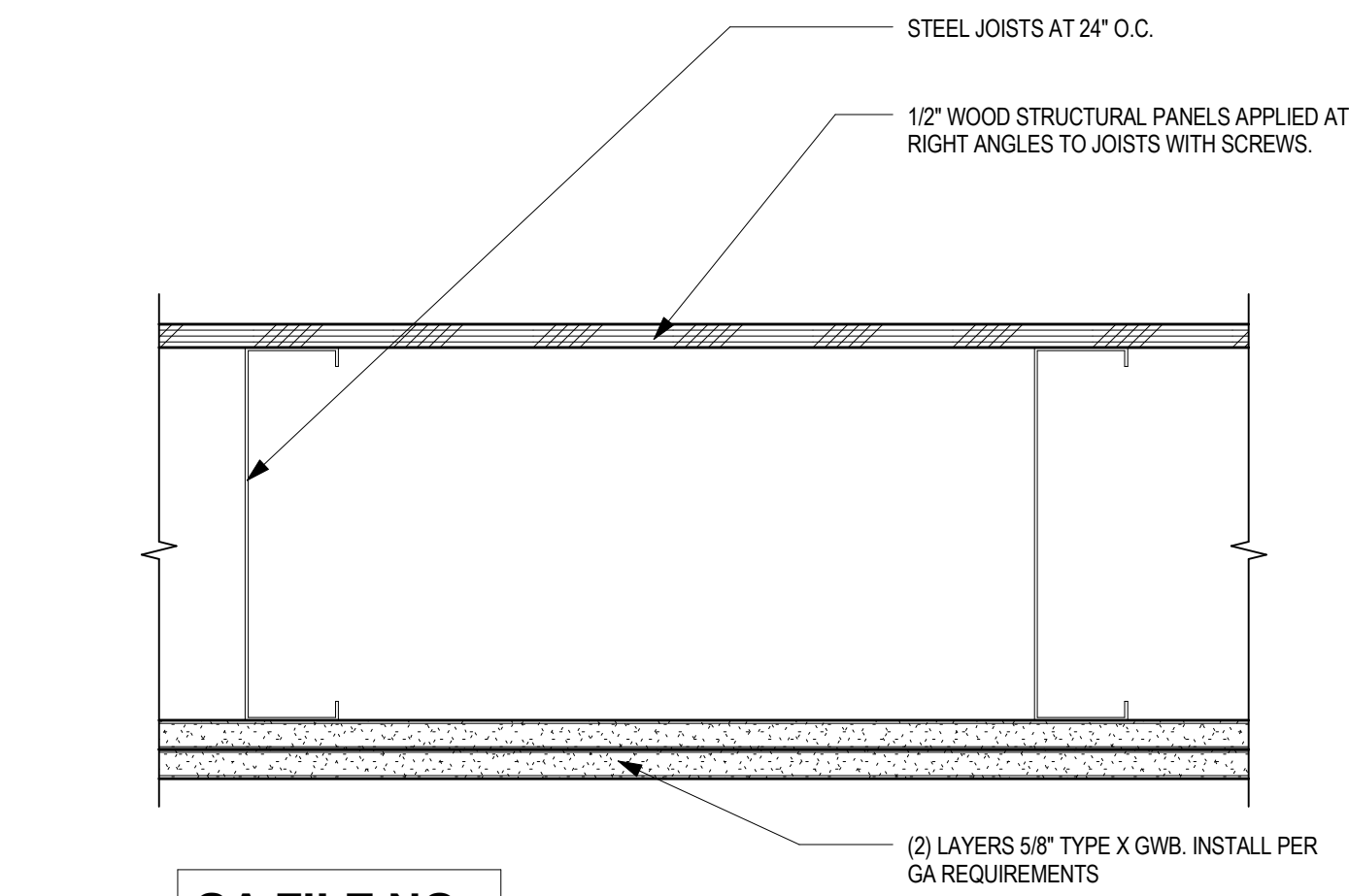
3
A4.51
3" = 1'-0"



WT-2
NON-RATED PARTITIONS W/ ACOUSTIC BATTS
GA FILE NO. WP 1052
STC 50-54

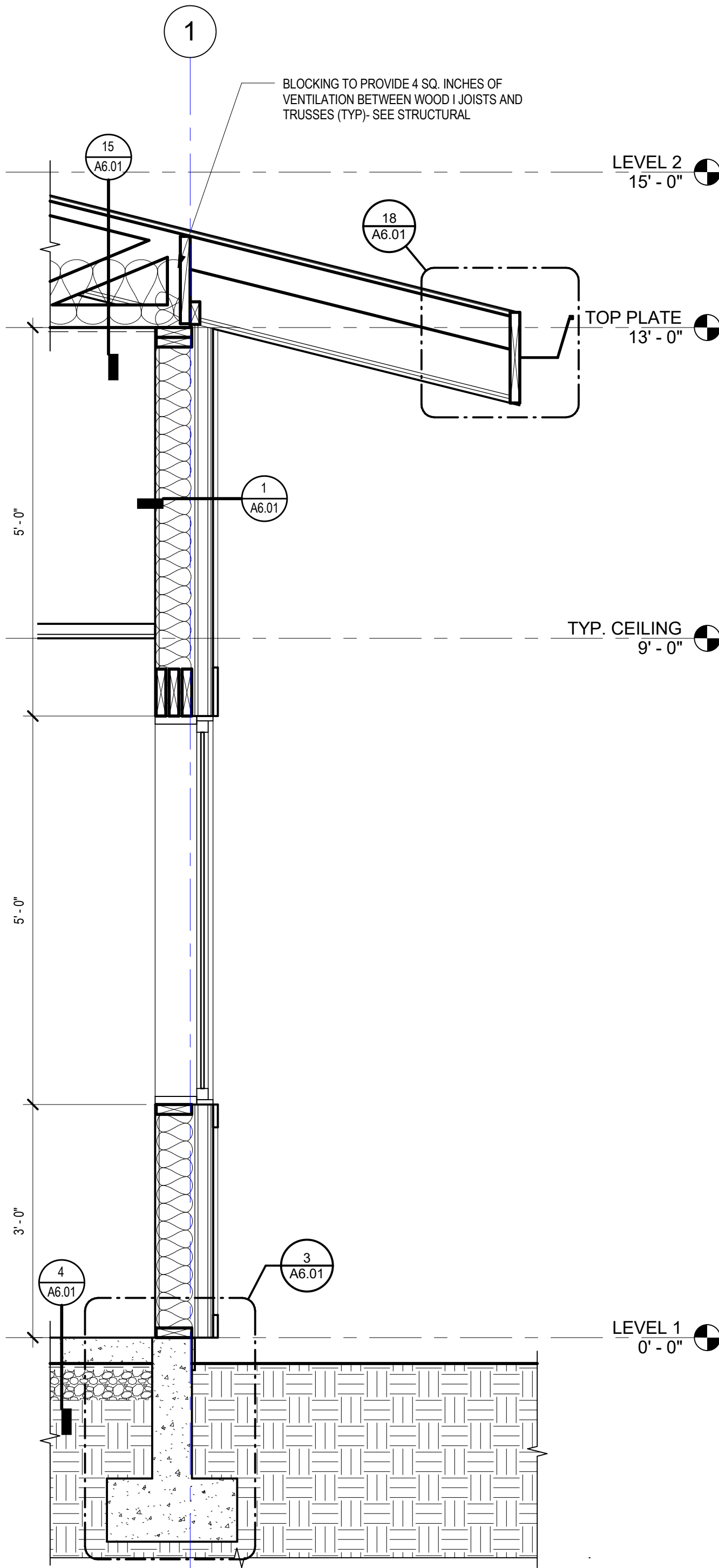


WT-1
NON-RATED PARTITIONS W/ ACOUSTIC BATTS
BASED ON GA FILE NO WP 1072
STC 35 (45-49 WHEN 1 LAYER OF GYP EXTENDS TO STRUCTURE)

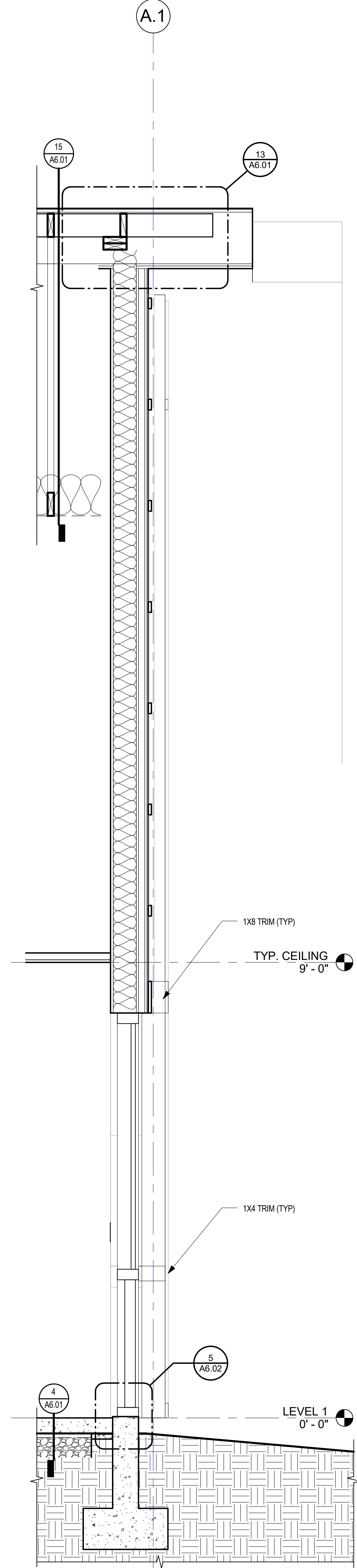


GA FILE NO. FC 4490

4
A4.51
1 HR CEILING ASSEMBLY
3" = 1'-0"



2
A4.51
NORTH WALL SECTION (TYP)
3/4" = 1'-0"



1
A4.51
WALL SECTION AT WALL RECESS
3/4" = 1'-0"

GENERAL NOTES - PARTITIONS

1. REFER TO FLOOR PLANS FOR PARTITION LOCATIONS
2. THE PARTITION TYPES DO NOT INCLUDE ANY APPLIED FINISHES. REFER TO ROOM FINISH SCHEDULE AND INTERIOR ELEVATIONS FOR FINISHES OR MATERIALS APPLIED TO THE PARTITION ASSEMBLY.
3. RATED ROOMS SHALL MAINTAIN CONTINUITY OF RATING AT CEILING, WALL AND FLOOR.
4. GYPSUM BOARD AT PARTITIONS NOT EXTENDING TO STRUCTURE ABOVE SHALL EXTEND MINIMUM 6 INCHES ABOVE CEILING.
5. CONTRACTOR SHALL COORDINATE LOCATIONS AND TYPES OF BACKING PLATES AT ALL WALLS FOR MOUNTED FURNISHINGS AND EQUIPMENT.
6. FIRE-CALK AND OFFSET ALL PENETRATIONS AT RATED PARTITIONS AS REQUIRED BY CODE TO MAINTAIN RATING.
7. PROVIDE ACOUSTICAL SEALANT (NON-HARDENING) FOR ACOUSTICAL PARTITIONS AT EDGES OF GYPSUM BOARD AT FLOOR.
8. WHERE A PARTITION MUST COMPLY WITH BOTH FIRE RATINGS AND ACOUSTICAL REQUIREMENTS, FIRE SEALANTS AND/OR FIRE SAFING SHALL BE PROVIDED IN LIEU OF ACOUSTICAL SEALANTS.
9. USE TAPERED EDGES OF GYPSUM BOARD AT REVEALS AND DOOR FRAMES TO ALLOW TRUE SURFACE ALIGNMENT.
10. FRAMING OF PARTITIONS CONTINUING TO STRUCTURE SHALL ACCOMMODATE 1/2" MINIMUM DEFLECTION AT HEAD TRACK.
11. DIMENSIONS GIVEN ON PLANS ARE FROM FACE OF STUD OF THE PARTITIONS AS SHOWN.
12. WHERE DISSIMILAR PARTITIONS ABUT, ALIGN FINISH FACES AT EXPOSED SIDE FOR SMOOTH SURFACE.